

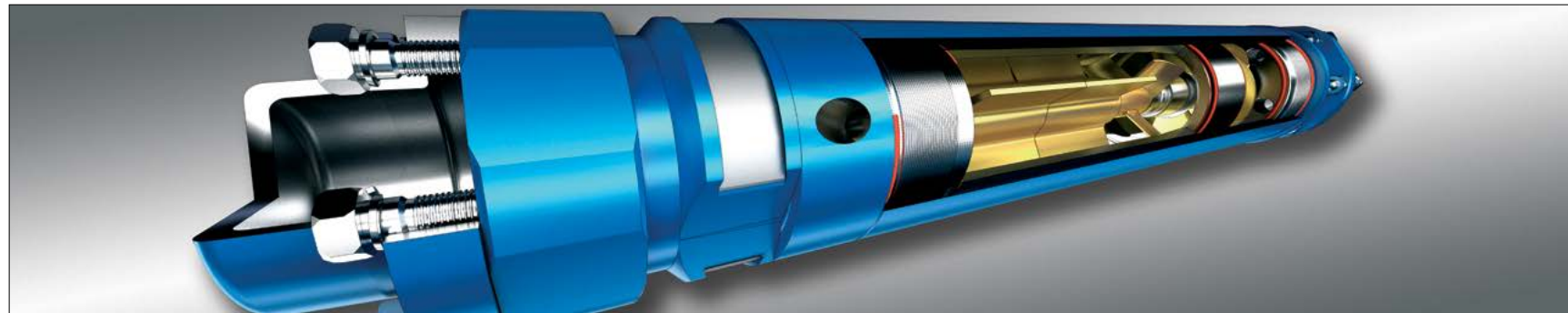
# Gas Separators NT

## 362 Series

Description	Availability of intake screen	Shaft	Length		Weight		Part Number	
			ft	m	Lb	Kg	CS	CR
NT 362 G 1900	included		2.36	0.72	53	24	009225000	CR009225000
NT 362 G 1900 HS	included	HS	2.36	0.72	53	24	009225001	CR009225001
NT 362 G 1900 HSS	included	HSS	2.36	0.72	53	24	009225002	CR009225002
NT 362 G V 1900	included		2.72	0.83	59	27	009225000V	CR009225000V
NT 362 G V 1900 HS	included	HS	2.72	0.83	59	27	009225001V	CR009225001V
NT 362 G V 1900 HSS	included	HSS	2.72	0.83	59	27	009225002V	CR009225002V
NT 362 G V 1900 F	no intake screen		2.33	0.71	55	25	009225010V	CR009225010V
NT 362 G V 1900 HS F	no intake screen	HS	2.33	0.71	55	25	009225011V	CR009225011V
NT 362 G V 1900 HSS F	no intake screen	HSS	2.33	0.71	55	25	009225012V	CR009225012V

ENGINEERING DATA				
Housing Diameter	3.62 in / 92 mm		Shaft Diameter	0.787 in / 20 mm
Shaft limit	Standart @60Hz	287 HP/ 211 kW	Shaft Area	0.49 in <sup>2</sup> / 314 mm <sup>2</sup>
	@50Hz	239 HP/ 176 kW	End shaft involute spline tape	20x1x9g
	High Strength* @60Hz	395 HP/ 290 kW	The maximum possible gas content at the inlet to the gas separator at a residual gas content at the pump inlet, Bres=0,25 – 0.4 to 0.6	
	*@50Hz	329 HP/ 242 kW		
Housing and fasteners material	CS – Standart CR – Corrosion-resistant	Housing, head, base, fasteners material is Carbon Steel Housing, head, base material is Carbon Steel with Stainless Steel coating, fasteners material – K-Monel		

\*Soft Start



Gas separator NT 400 G 1900

# Gas Separators NT

## 400 Series

Description	Availability of intake screen	Shaft	Length		Weight		Part Number	
			ft	m	Lb	Kg	CS	CR
NT 400 G 1900	included		2.36	0.72	46	21	010325000	CR010325000
NT 400 G 1900 HS	included	HS	2.36	0.72	46	21	010325001	CR010325001
NT 400 G 1900 HSS	included	HSS	2.36	0.72	46	21	010325002	CR010325002
NT 400 G 1900 F	no intake screen		1.87	0.57	51	23	010325010	CR010325010
NT 400 G 1900 HS F	no intake screen	HS	1.87	0.57	51	23	010325011	CR010325011
NT 400 G 1900 HSS F	no intake screen	HSS	1.87	0.57	51	23	010325012	CR010325012
NT 400 G 3800	included		2.49	0.76	59	27	010350000	CR010350000
NT 400 G 3800 HS	included	HS	2.49	0.76	59	27	010350001	CR010350001
NT 400 G 3800 HSS	included	HSS	2.49	0.76	59	27	010350002	CR010350002
NT 400 G 3800 F	no intake screen		2.13	0.65	55	25	010350010	CR010350010
NT 400 G 3800 HS F	no intake screen	HS	2.13	0.65	55	25	010350011	CR010350011
NT 400 G 3800 HSS F	no intake screen	HSS	2.13	0.65	55	25	010350012	CR010350012
NT 400 G 6000	included		2.49	0.76	59	27	010380000	CR010380000
NT 400 G 6000 HS	included	HS	2.49	0.76	59	27	010380001	CR010380001
NT 400 G 6000 HSS	included	HSS	2.49	0.76	59	27	010380002	CR010380002
NT 400 G V 1900	included		2.72	0.83	64	29	010325000V	CR010325000V
NT 400 G V 1900 HS	included	HS	2.72	0.83	64	29	010325001V	CR010325001V
NT 400 G V 1900 HSS	included	HSS	2.72	0.83	64	29	010325002V	CR010325002V
NT 400 G V 1900 F	no intake screen		2.33	0.71	59	27	010325010V	CR010325010V
NT 400 G V 1900 HS F	no intake screen	HS	2.33	0.71	59	27	010325011V	CR010325011V
NT 400 G V 1900 HSS F	no intake screen	HSS	2.33	0.71	59	27	010325012V	CR010325012V

ENGINEERING DATA				
Housing Diameter	4.00 in / 101.6 mm		Shaft Diameter	0.866 in / 22 mm
Shaft limit	Standart @60Hz	387 HP/ 248 kW	Shaft Area	0.59 in <sup>2</sup> / 380 mm <sup>2</sup>
	@50Hz	322 HP/ 237 kW	End shaft involute spline tape	22x1x9g
	High Strength*@60Hz	534 HP/ 392 kW	The maximum possible gas content at the inlet to the gas separator at a residual gas content at the pump inlet, Bres=0,25 – 0.4 to 0.6	
	*@50Hz	445 HP/ 327 kW		
Housing and fasteners material	CS – Standart CR – Corrosion-resistant	Housing, head, base, fasteners material is Carbon Steel Housing, head, base material is Carbon Steel with Stainless Steel coating, fasteners material – K-Monel		